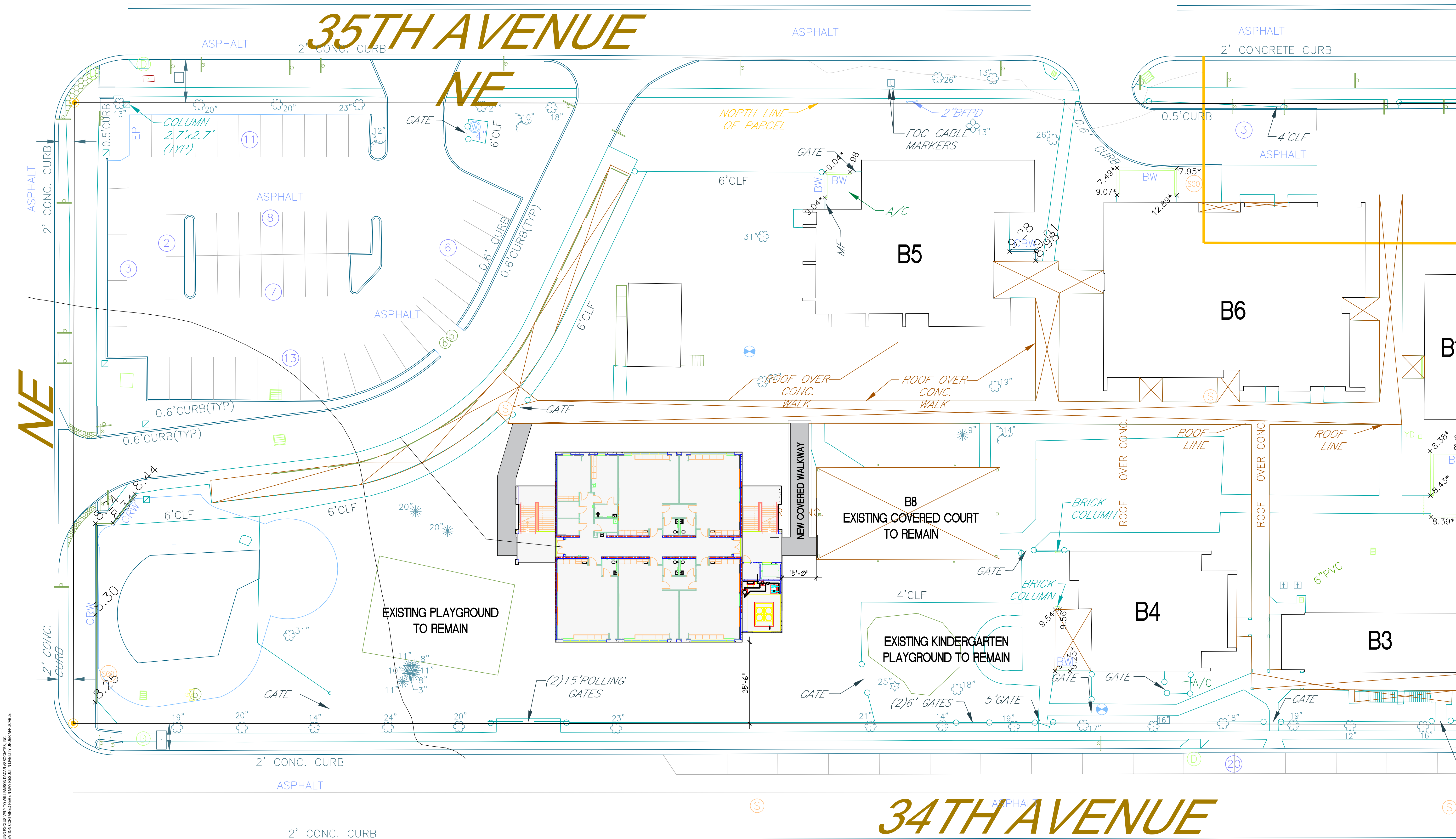


35TH AVENUE



34TH AVENUE

NE

SITE PLAN - BUILDING RELOCATION
SCALE: 1"=20'-0"

ARCHITECT: AA0002541
ENGINEER: EB 0006884

PROFESSIONAL: TED WILLIAMSON
AEP# 96265 / PEP# 38873

PCS
PETERSBURG COMMUNITY SCHOOLS
10 CLASSROOM PROTOTYPE BUILDING
NORTH SHORE ELEMENTARY
200 35 TH AVE. NE
ST. PETERSBURG, FL 33704-1534

ISSUE/REVISION OF DRAWINGS:

NO.	DATE	DESCRIPTION
1	12/19/19	ISSUE: SCHEMATIC
2	05/30/20	ISSUE: 100% DD
3	7/31/20	ISSUE: 100% CD

PHASE: CONSTRUCTION DOCUMENTS
CHECKED: MFF/TJW
DRAWN: TG
DRAWING TITLE:
SITE PLAN

WDA PROJ. NO.: 1908-02A
OWNER PROJ. NO.: 9354
SCALE: REFER TO SHEET
SHEET NO.

A0.1

THIS DOCUMENT CONTAINS PROPRIETARY INFORMATION AND TRADE SECRETS. IT IS THE PROPERTY OF WILLIAMSON DACAR ASSOCIATES, INC. AND IS TO BE USED ONLY FOR THE PROJECT AND SITE SPECIFICALLY IDENTIFIED IN THE TITLE BLOCK. ANY REUSE OR DISSEMINATION OF THIS DOCUMENT WITHOUT THE WRITTEN PERMISSION OF WILLIAMSON DACAR ASSOCIATES, INC. IS STRICTLY PROHIBITED.

10 CLASSROOM PROTOTYPE BUILDING NORTH SHORE ELEMENTARY

200 35 TH AVE. NE
ST. PETERSBURG, FL 33704-1534



PINELLAS COUNTY SCHOOLS

1111 BELCHER ROAD LARGO, FLORIDA 33773
DR. MICHAEL A. GREGO, SUPERINTENDENT
JOANNE LENTINO - AT LARGE D1 | LISA N. CANE - AT LARGE D2 | NICOLE M. CARR PH.D - AT LARGE D3
EILEEN M. LONG - VICE CHAIRPERSON, SINGLE MEMBER D4 | CAROL J. COOK - CHAIRPERSON, SINGLE MEMBER D5
BILL DUDLEY - SINGLE MEMBER D6 | RENE FLOWERS - SINGLE MEMBER D7

PSCSB PROJECT NO:9356

WDA Project No: 1908-02A

CONSTRUCTION DOCUMENTS

07/30/2020

ARCHITECT :



Architect: AA0002541 Engineering: EB 0006884
15500 Lightwave Drive, Suite 106 Clearwater, Florida 33760
(727) 725-0951 www.williamsondacar.com

CIVIL:



CIVIL ENGINEER
7026 LITTLE ROAD NEW PORT RICHEY, FL 34654
PHONE (727) 849-8010 FAX (727) 849-8020

MECH, PLUM, ELEC, & FIRE PROT.:



ENGINEERING MATRIX, INC.
2860 SCHERER DR, STE 640, ST. PETERSBURG, FL 33716
PHONE (727) 573-4656

ARCHITECT: Williamson Dacar Associates

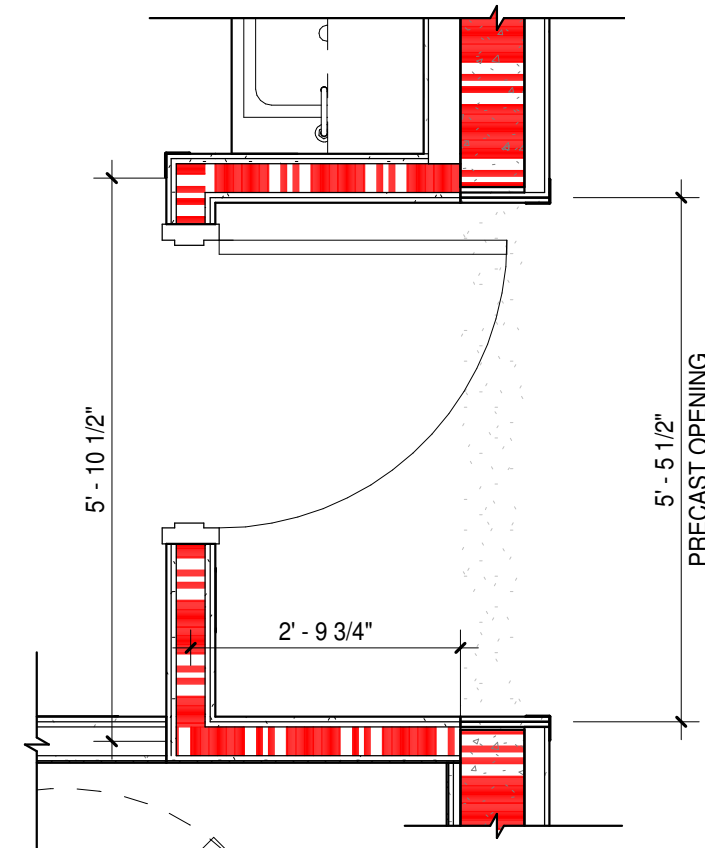
ARCHITECT OF RECORD: _____ DATE _____

NOTE:
TO THE BEST OF MY KNOWLEDGE, THESE DRAWINGS AND
PROJECT MANUALS ARE COMPLETE AND COMPLY WITH THE
FLORIDA BUILDING CODE SIXTH EDITION 2017 AND FLORIDA FIRE
PREVENTION CODE SIXTH EDITION

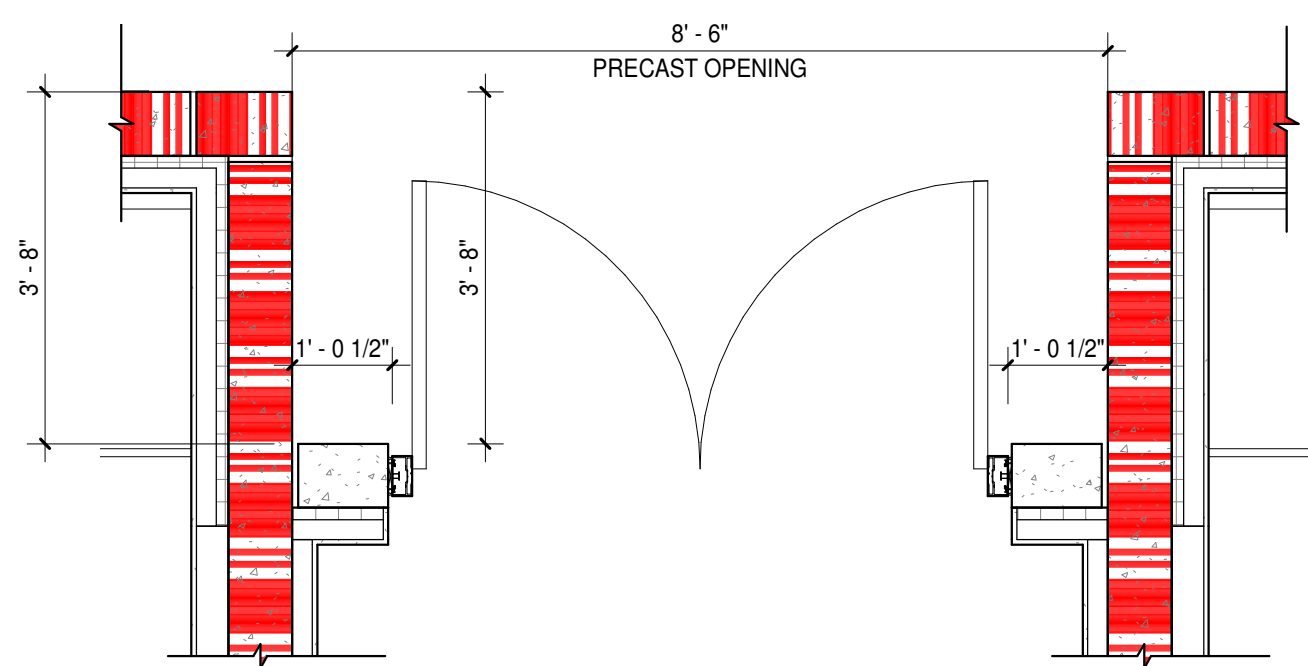
THIS DOCUMENT CONTAINS COPYRIGHTED MATERIAL AND TRADE SECRET INFORMATION BELONGING EXCLUSIVELY TO WILLIAMSON DACAR ASSOCIATES, INC.
ALL RIGHTS RESERVED. NO PART OF THIS DOCUMENT MAY BE REPRODUCED OR TRANSMITTED IN ANY FORM OR BY ANY MEANS, ELECTRONIC OR MECHANICAL, INCLUDING PHOTOCOPYING, RECORDING, OR BY ANY INFORMATION STORAGE AND RETRIEVAL SYSTEM, WITHOUT PERMISSION IN WRITING FROM WILLIAMSON DACAR ASSOCIATES, INC.

10 CLASSROOM PROTOTYPE BUILDING - NORTH SHORE ELEMENTARY - CONSTRUCTION DOCUMENTS - 07/30/2020

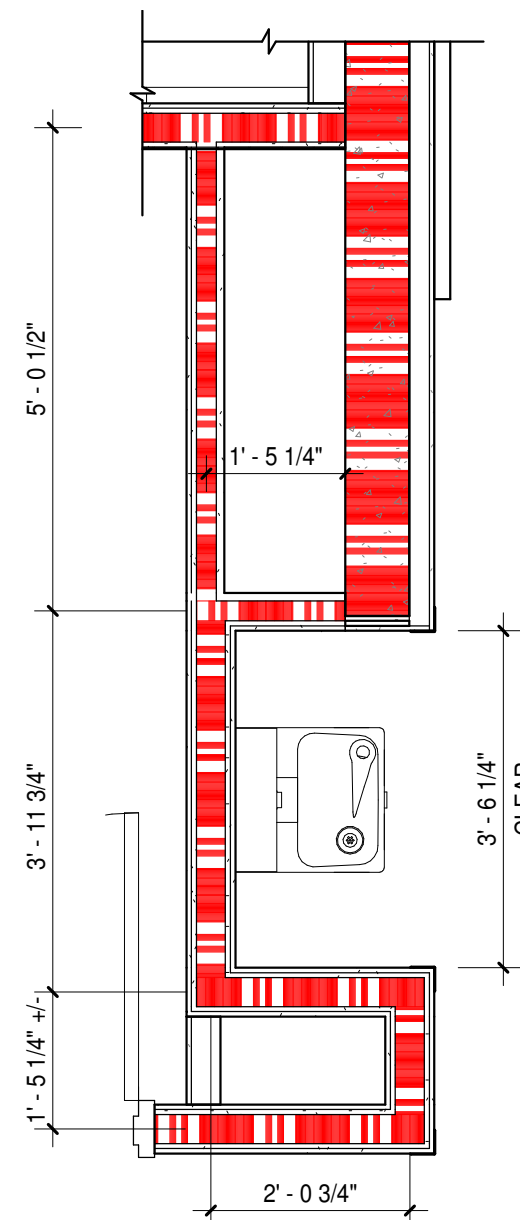
THIS DOCUMENT CONTAINS COPYRIGHTED MATERIAL AND TRADE SECRET INFORMATION BELONGING EXCLUSIVELY TO WILLIAMSON DACAR ASSOCIATES, INC. ANY UNAUTHORIZED REPRODUCTION OR DISSEMINATION OF ANY PART OF THE INFORMATION CONTAINED HEREIN WITHOUT THE WRITTEN PERMISSION OF WILLIAMSON DACAR ASSOCIATES, INC. IS PROHIBITED. 01/20/20 04:42:41 AM



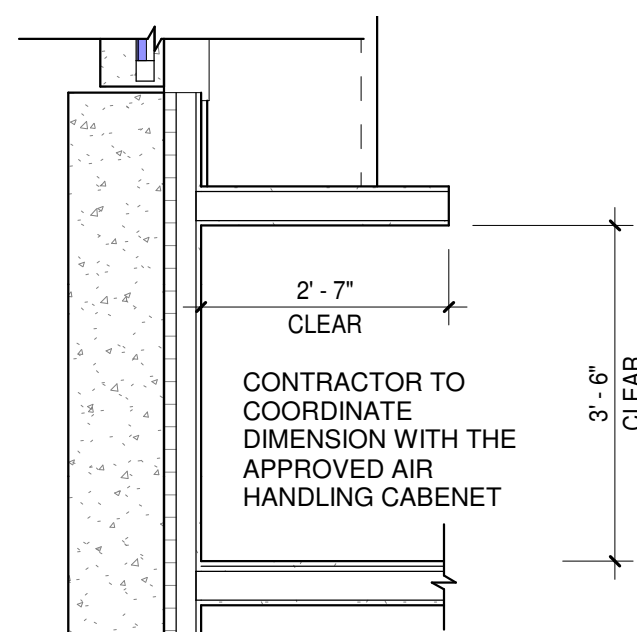
2 TYPICAL ENLARGED DIMENSION PLAN @ CLASSROOM ENTRY
A1.2.1 / 1/2" = 1'-0"



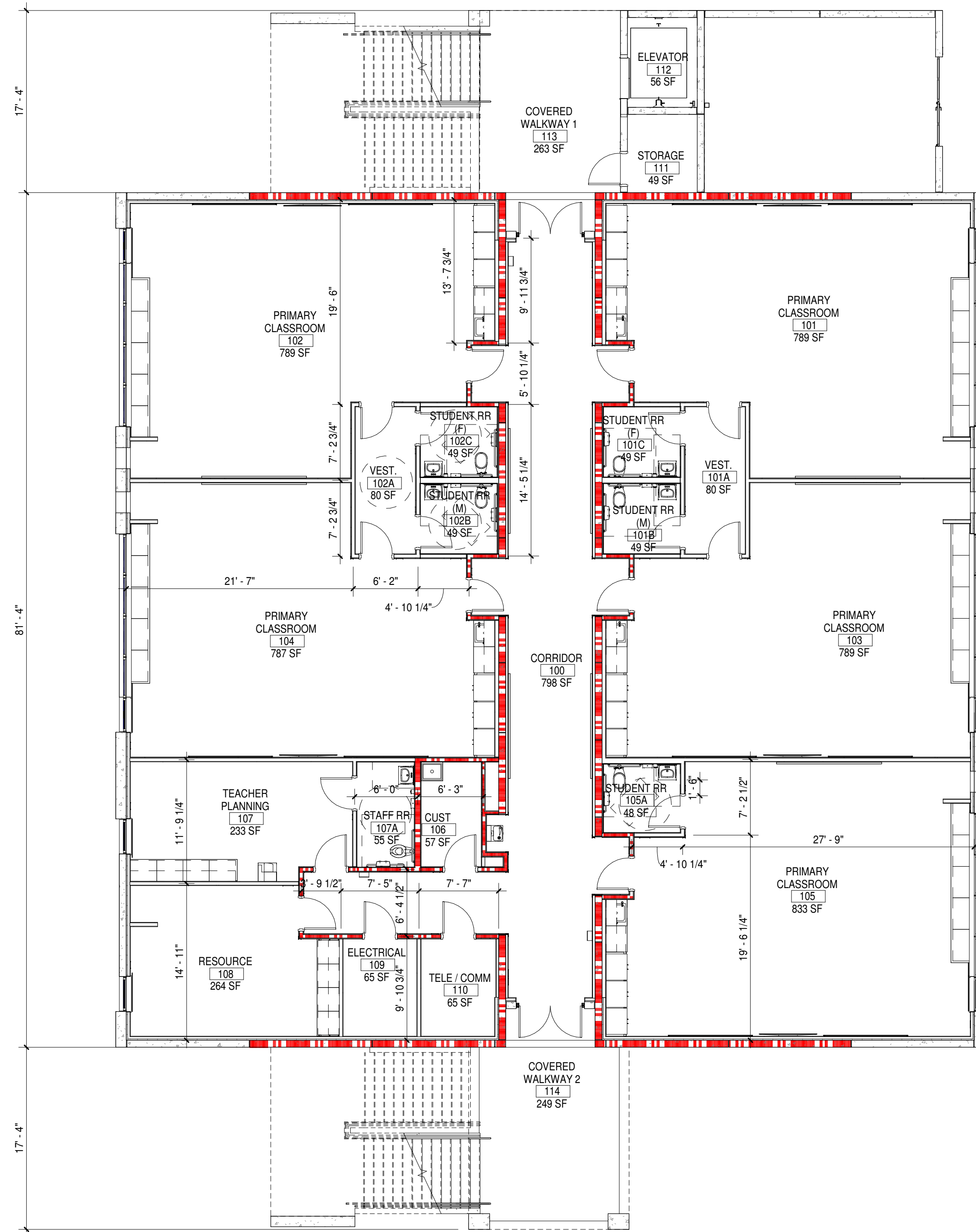
3 TYPICAL ENLARGED DIMENSION PLAN @ ENTRY
A1.2.1 / 1/2" = 1'-0"



4 TYPICAL ENLARGED DIMENSION PLAN @ WATER FOUNTAIN
A1.2.1 / 1/2" = 1'-0"



5 TYPICAL ENLARGED DIMENSION PLAN @ HVAC WALL
A1.2.1 / 1/2" = 1'-0"



1 FIRST FLOOR DIMENSION PLAN
A1.2.1 / 1/8" = 1'-0"

DIMENSIONS LEGEND

ASSUMED CENTER LINE OF PARTITION TYPE

ASSUMED FACE OF CONCRETE PARTITION

GENERAL NOTES

- SEE STRUCT. DRAWINGS FOR EXTERIOR WALL DIMENSIONS
- SEE ENLARGED PLAN/DETAILS FOR MISC. INTERIOR DIMENSIONS

FLOOR PLAN LEGEND

NEW WALL CONSTRUCTION (STEEL STUD FRAME)

GENERAL NOTE:

1. CONDUITS ROUGH IN DURING SLAB PREP ON EXTERIOR WALLS MUST MAINTAIN A 2" CLEARANCE FROM THE INSIDE FACE OF THE PANEL SO AS NOT TO DISTURB THE CONTINUOUS INSULATION INSTALLATION.
2. IN FIRE RESISTANCE RATED WALLS-MAINTAIN THE FIRE RESISTANCE RATING, SEAL BOTH SIDES OF JOINT, ENCAPSULATING THE CERAMIC FIBER BLANKET PROTECTION.



ARCHITECT: AA0002541
ENGINEER: EB 0006884

PROFESSIONAL: TED WILLIAMSON
A/E/P# 86285 / P/E# 38873

PCS
PETERSBURG COMMUNITY SCHOOLS
10 CLASSROOM PROTOTYPE BUILDING
NORTH SHORE ELEMENTARY
200 35 TH AVE. NE
ST. PETERSBURG, FL 33704-1534

ISSUE/REVISION OF DRAWINGS:		
NO.	DATE	DESCRIPTION
1	12/19/19	100% SCHEMATIC
2	05/30/20	100% DD SET
3	07/30/20	100% CD REVIEW

PHASE: CONSTRUCTION DOCUMENTS

CHECKED: MFF/TJW

DRAWN: TG

DRAWING TITLE:

FIRST FLOOR DIMENSION PLAN

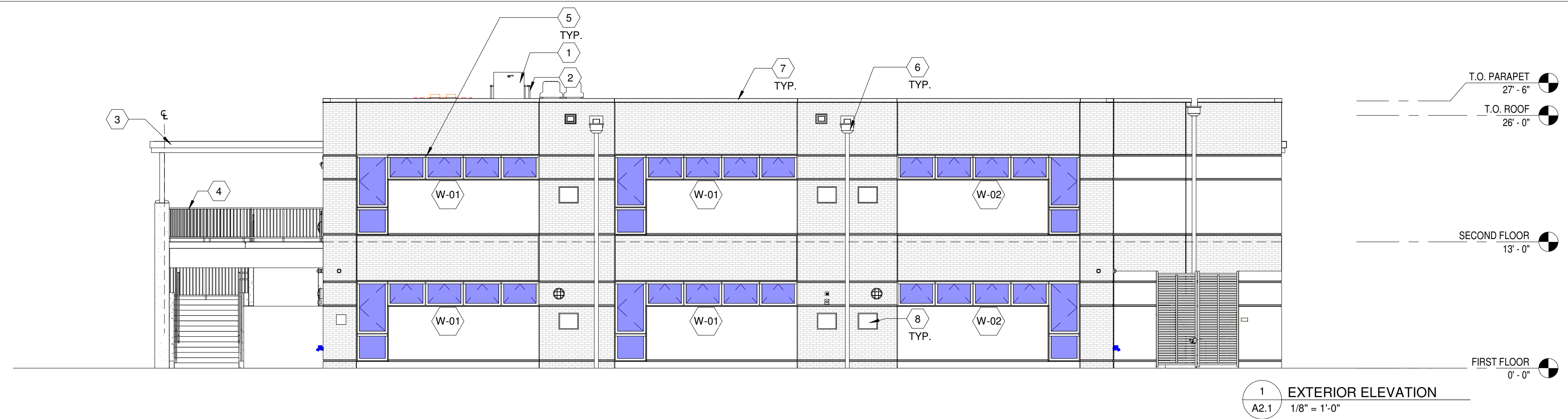
WDA PROJ. NO: 1908-02A

OWNER PROJ. NO: 9354

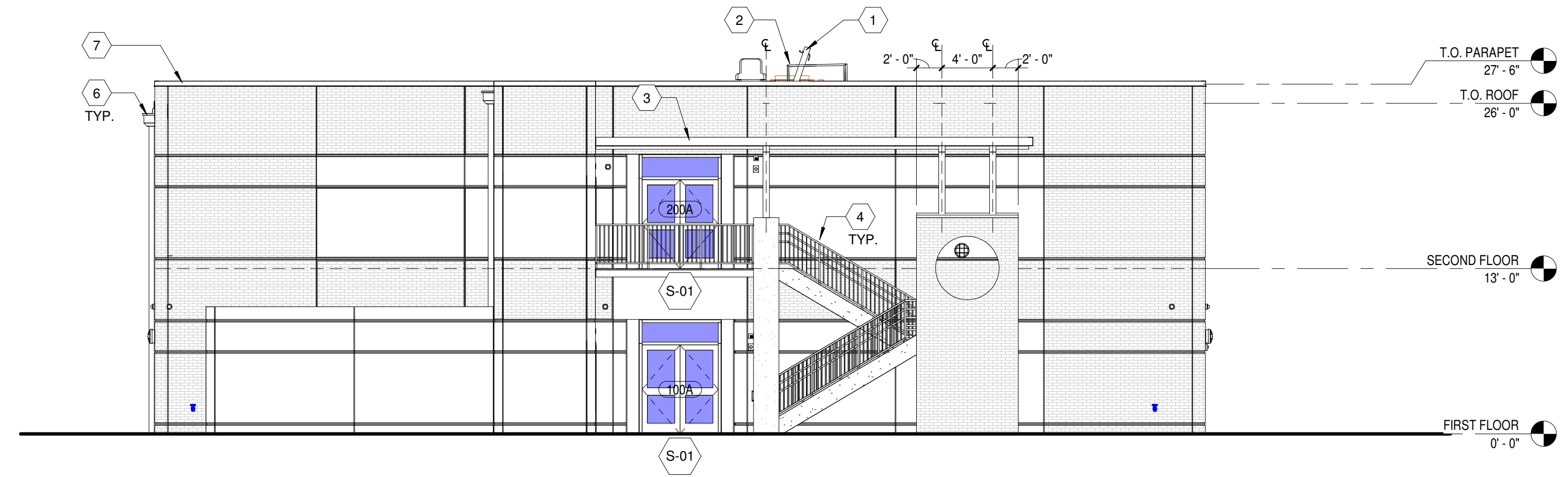
SCALE: REFER TO SHEET

SHEET NO.

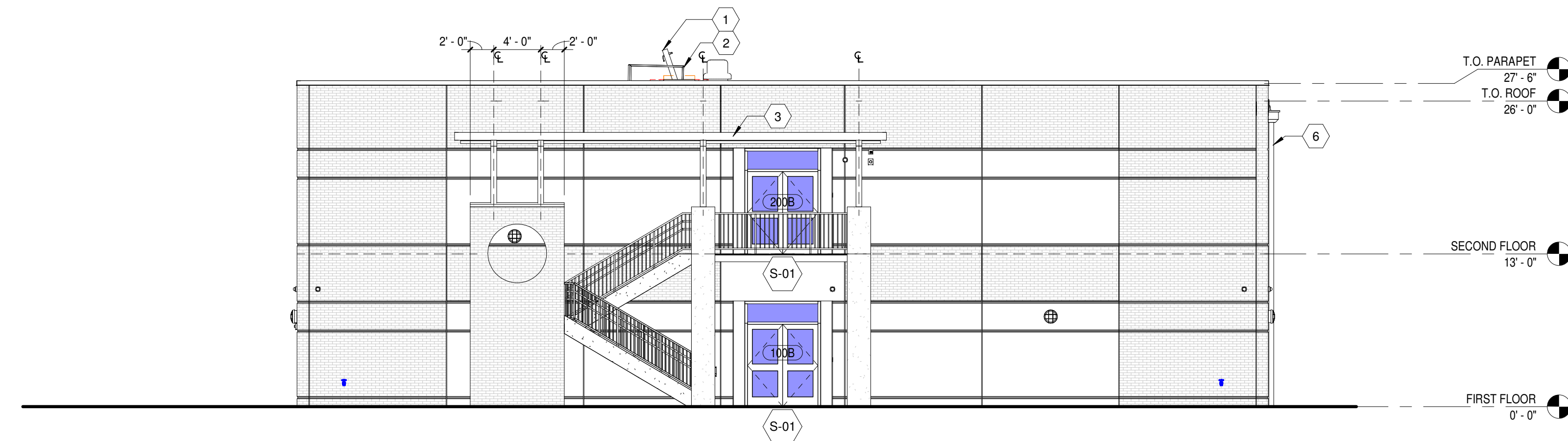
A1.2.1



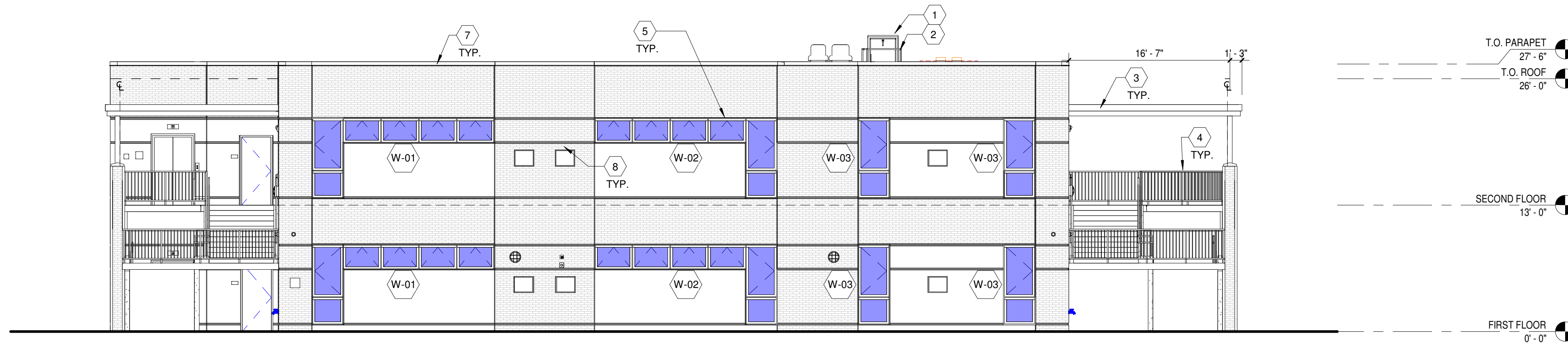
1 EXTERIOR ELEVATION
A2.1 1/8" = 1'-0"



2 EXTERIOR ELEVATION
A2.1 1/8" = 1'-0"



3 EXTERIOR ELEVATION
A2.1 1/8" = 1'-0"

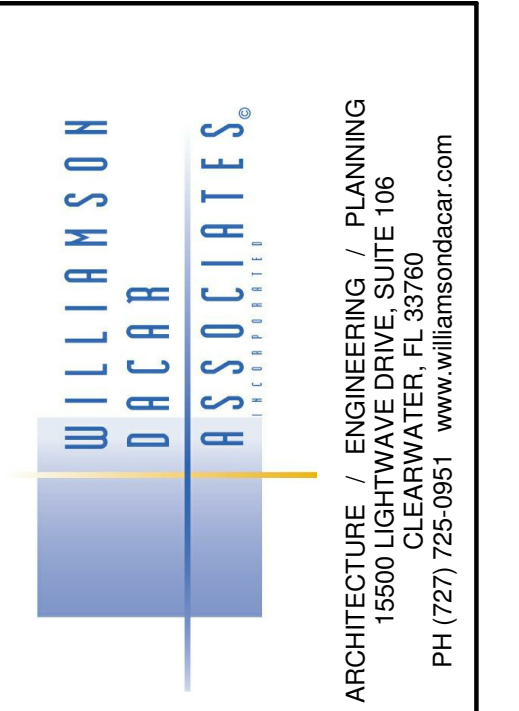


4 EXTERIOR ELEVATION
A2.1 1/8" = 1'-0"

EXTERIOR ELEVATION GENERAL NOTES

1. REFER TO STRUCTURAL DRAWINGS FOR TILT PANEL ELEVATIONS AND DIMENSIONS.
2. SEE WINDOW TYPES AND ELEVATIONS FOR WINDOW DETAILS, TYP.
3. PROVIDE WATERPROOFING AT FLOORS AND WALLS BELOW GRADE TO PREVENT WATER INFILTRATION TO THE BUILDING INTERIOR CAUSED BY HYDROSTATIC PRESSURE OR OTHER WATER CONDITIONS.
4. EXTERIOR WALL JOINTS-BOTH SIDES (OUTSIDE AND INSIDE) OF EXTERIOR WALL JOINT SHALL BE SEALED WITH AN EXTERIOR JOINT SEALANT SYSTEM, CONSISTING OF A FOAM BACKEROD PLACED INTO A CLEAN JOINT CAVITY AND COVERED WITH A URETHANE OR OTHER ACCEPTABLE JOINT SEALANT MATERIAL, PER SPEC.

KEYED NOTES	
NUM	NOTE
1	ROOF HATCH ASSEMBLY, FL#15110
2	SCUTTLE ASSEMBLY 30" X 36"
3	PRE-ENGINEERED COVERED WALKWAY CANOPY, SEE SPEC
4	ALUMINUM RAILING ASSEMBLY
5	ALUMINUM WINDOWS
6	PROVIDE CONDUCTOR HEAD, DOWNLEADER
7	PREFINISHED METAL CAP
8	MECHANICAL LOUVER, REFER MEP



ARCHITECT: AA0002541
ENGINEER: EB 0006884

PROFESSIONAL: TED WILLIAMSON
A/E/P # 92285 / P/E # 38873

PCS PROJECT CONSULTANTS & SERVICES
10 CLASSROOM PROTOTYPE BUILDING
NORTH SHORE ELEMENTARY
200 35 TH AVE. NE
ST. PETERSBURG, FL 33704-1534

ISSUE/REVISION OF DRAWINGS:		
NO.	DATE	DESCRIPTION
1	12/19/19	100% SCHEMATIC
2	05/30/20	100% DD SET
3	07/30/20	100% CD REVIEW

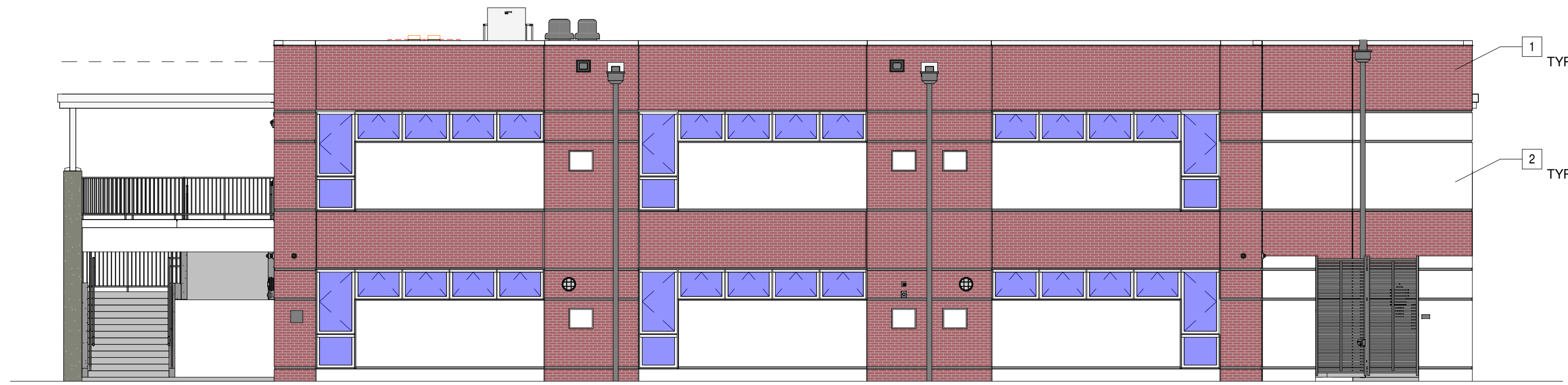
PHASE: CONSTRUCTION DOCUMENTS
CHECKED: MFF/TJW
DRAWN: TG
DRAWING TITLE:
EXTERIOR ELEVATIONS

WDA PROJ. NO: 1908-02A
OWNER PROJ. NO: 9354
SCALE: REFER TO SHEET
SHEET NO.

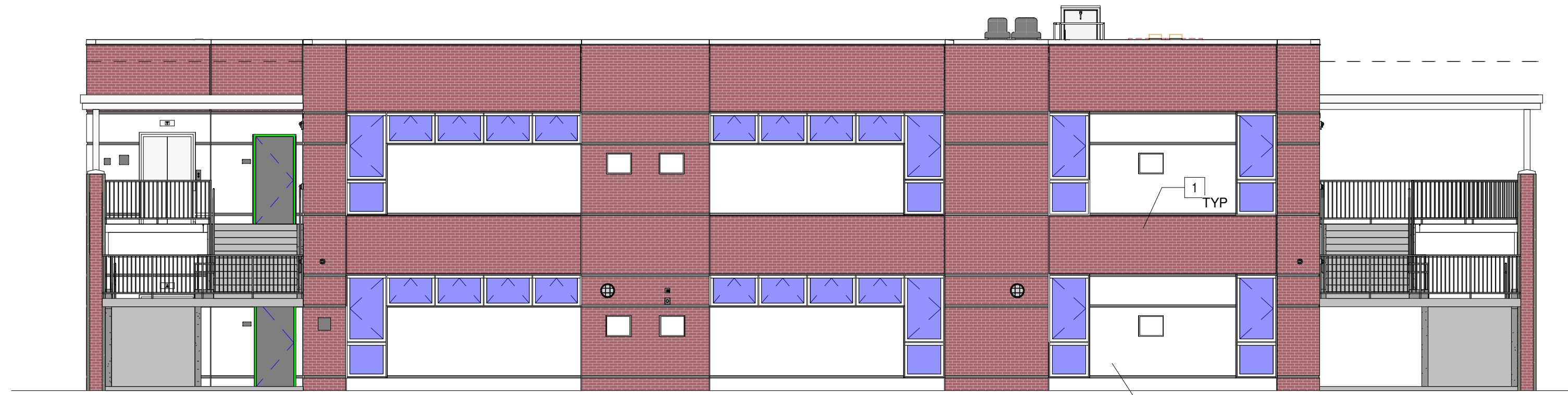
A2.1

THIS DOCUMENT CONTAINS COPYRIGHTED MATERIAL AND TRADE SECRET INFORMATION BELONGING EXCLUSIVELY TO WILLIAMSON DACAR ASSOCIATES, INC. ANY UNAUTHORIZED USE OF THIS DOCUMENT OR REPRODUCTION OF ANY OF THE INFORMATION CONTAINED HEREIN WITHOUT PERMIT IS STRICTLY PROHIBITED UNDER APPLICABLE LAWS.

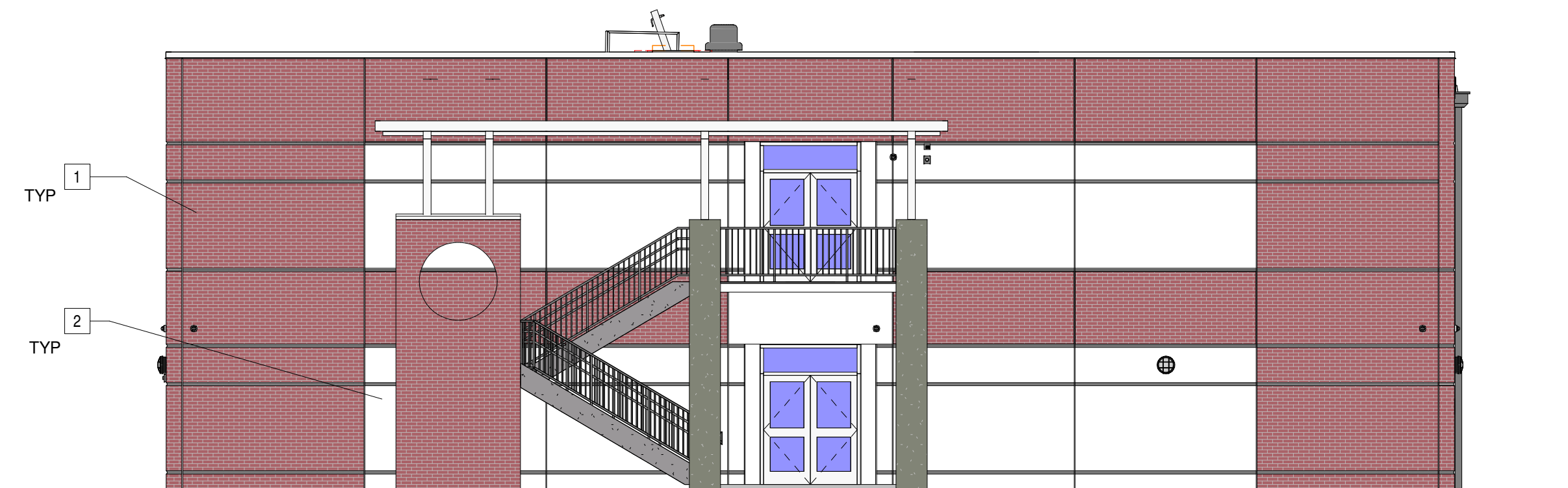
7/31/2020 11:55:15 PM



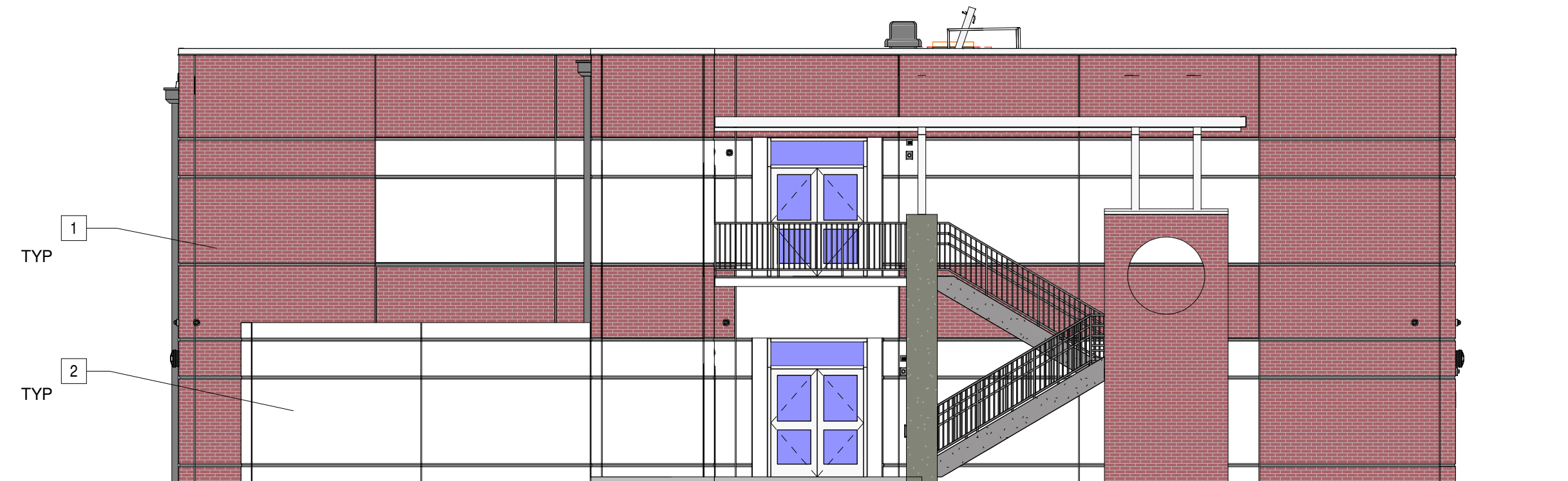
1 ELEVATION 1
A2.2 1/8" = 1'-0"



2 ELEVATION 2
A2.2 1/8" = 1'-0"



3 ELEVATION 3
A2.2 1/8" = 1'-0"



4 ELEVATION 4
A2.2 1/8" = 1'-0"

EXTERIOR FINISHES	
1	BRICK SURFACE
2	WHITE COLOR PRECAST FINISH



ARCHITECT: AA0002541
ENGINEER: EB 0006884

PROFESSIONAL: TED WILLIAMSON
A/E# 96285 / P/E# 38873

pcs
PETERSBURG COMMUNITY SCHOOLS
10 CLASSROOM PROTOTYPE
BUILDING
NORTH SHORE ELEMENTARY
200 35 TH AVE. - NE
ST. PETERSBURG, FL 33704-1534

ISSUE/REVISION OF DRAWINGS:		
NO.	DATE	DESCRIPTION
1	12/19/19	100% SCHEMATIC
2	05/30/20	100% DD SET
3	07/30/20	100% CD REVIEW

PHASE: CONSTRUCTION DOCUMENTS

CHECKED: Checker
DRAWN: Author

DRAWING TITLE:
**EXTERIOR
COLORED
ELEVATIONS**

WDA PROJ. NO: 1908-02A
OWNER PROJ. NO: 9354
SCALE: REFER TO SHEET

SHEET NO.
A2.2